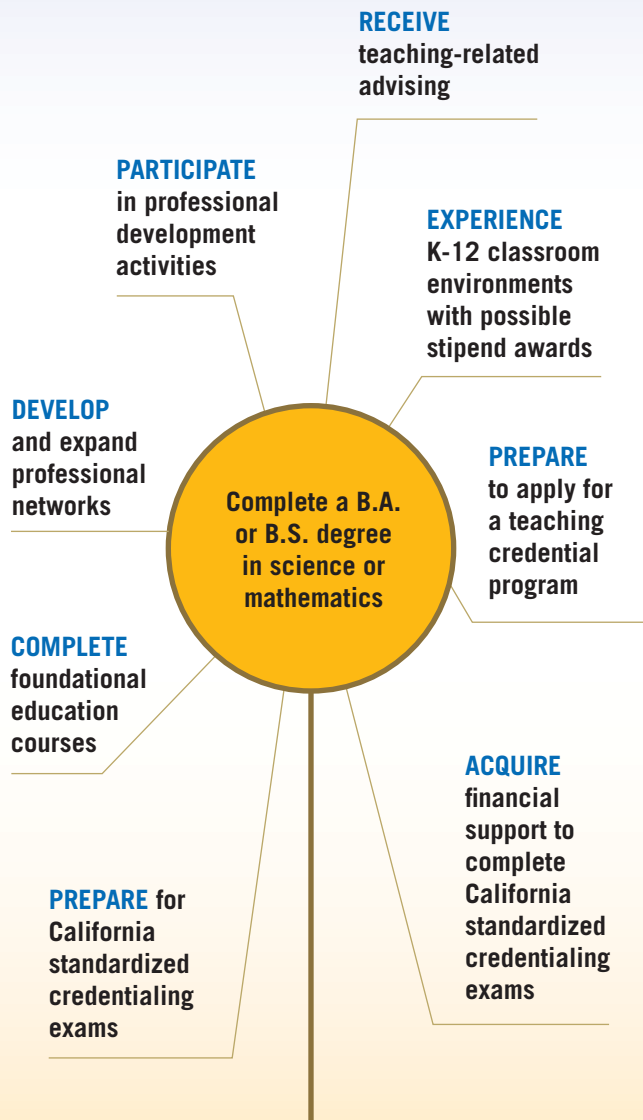
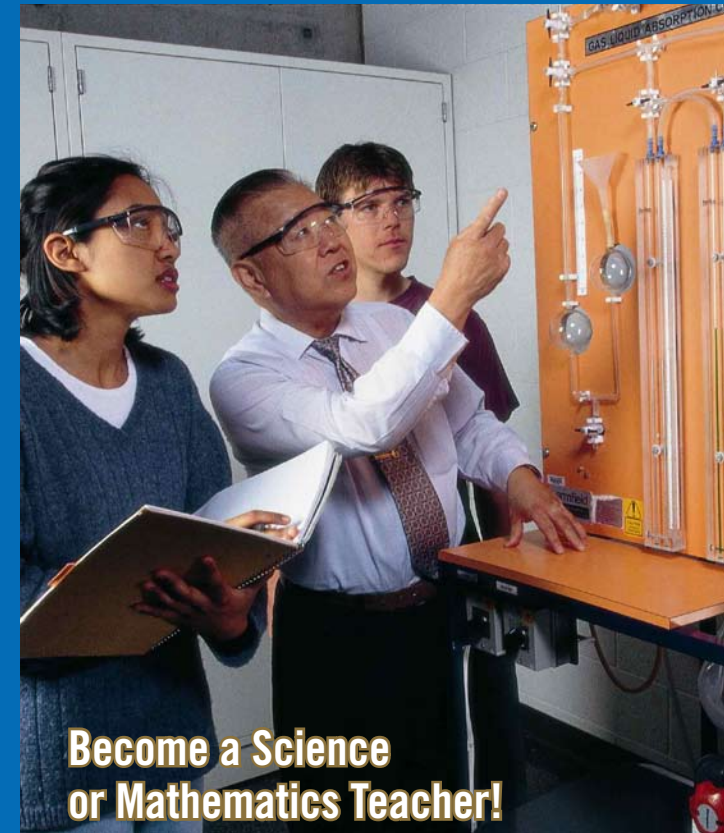


Rise Above Today's Economy ...



Prepare for a Career
in Teaching Science
or Mathematics

California Teach-Science Mathematics Initiative (CaTEACH-SMI)



**Become a Science
or Mathematics Teacher!**
Let CaTEACH-SMI help you
explore the field of teaching.



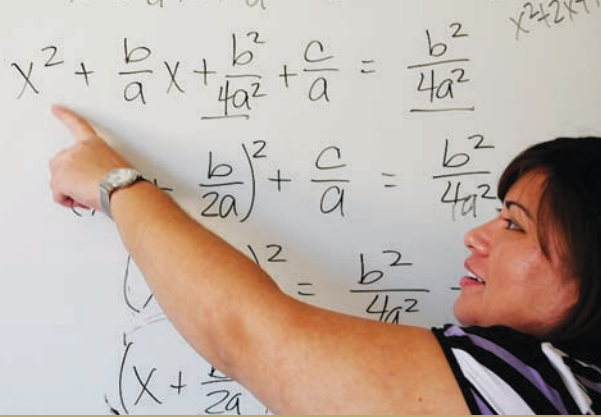
University of California, Riverside

California Teach-Science
Mathematics Initiative
(CaTEACH-SMI) Resource Center

1104 Pierce Hall
Riverside, CA 92521

www.smi.ucr.edu
E-mail smi@ucr.edu
Phone (951) 827-4970
Fax (951) 827-4971

UNIVERSITY OF CALIFORNIA
UCRIVERSIDE



“SMI has been my greatest support system in my efforts to become a teacher. SMI has provided me with vast opportunities that not only prepared me to become a teacher, but also constantly reinforced my decision that the teaching profession is the career that I want to enter.”

~Alexia Olson (2008 mathematics single-subject intern teaching credential candidate and recipient of a national award, The Knowles Teaching Scholarship)

California Education in Crisis

- With an economy increasingly reliant on science, technology, engineering, and mathematics (STEM), this is a propitious time to explore and prepare for a career in teaching science or mathematics.
- Statistics about new California science and mathematics teacher hires:
 - 54% of new science teachers are teachers not fully credentialed¹
 - 66% of new math teachers are teachers not fully credentialed¹
- Beginning in 2010, one-third (1/3) of the California teacher workforce will become eligible to retire, which will result in a shortfall of over 100,000 teachers.

1. California Council on Science and Technology, 2007

What is CaTEACH-SMI?

CaTEACH-SMI is a UC systemwide initiative to recruit highly qualified science and mathematics teachers. The program resulted from a compact between the Governor of California and the University of California President.

What are the benefits in getting involved with CaTEACH-SMI?

- Getting involved is FREE and VOLUNTARY
- Receive personalized advising to develop a career pathway. With a customized plan, you can:
 - find competitive salaries in school districts of YOUR choice
 - negotiate a starting salary (typically unavailable for NON-STEM teachers)
 - become an emerging leader in your school district, school site, and community
 - develop your professional profile without delaying graduation
 - increase the marketability of your University of California degree
 - access financial support opportunities (e.g. reimbursement, stipends, scholarships) in pursuit of teaching
 - access teaching-related materials and resources
 - get involved with pre-teaching professional development seminars and events

Getting Started

Step #1:

Sign up for an SMI Information-Advising Workshop at smi.ucr.edu/workshops.html.

Step #2:

Subscribe to SMI Listserv, <http://lists.ucr.edu/mailman/listinfo/cateach-smi>



“I would not have realized my passion for teaching without the help of the SMI [Resource] Center. I decided I wanted to become a teacher during my third year. SMI connected me to such opportunities as CMST and [professional] workshops.”

~Kristen Simester (Biology—Senior)

“I thoroughly enjoyed the challenge and the experience...it was a safe situation to try and implement the concepts I had been learning in class.”

~Kayla Bui
(Mathematics—Freshman)



“I prepared a lesson on Phylogenetic trees, and then ran a project for the students to practice creating one. The students were really excited about the project and the [mentor] teacher gave me positive feedback.”

~Andrea Maisey (Neuroscience—Senior)

